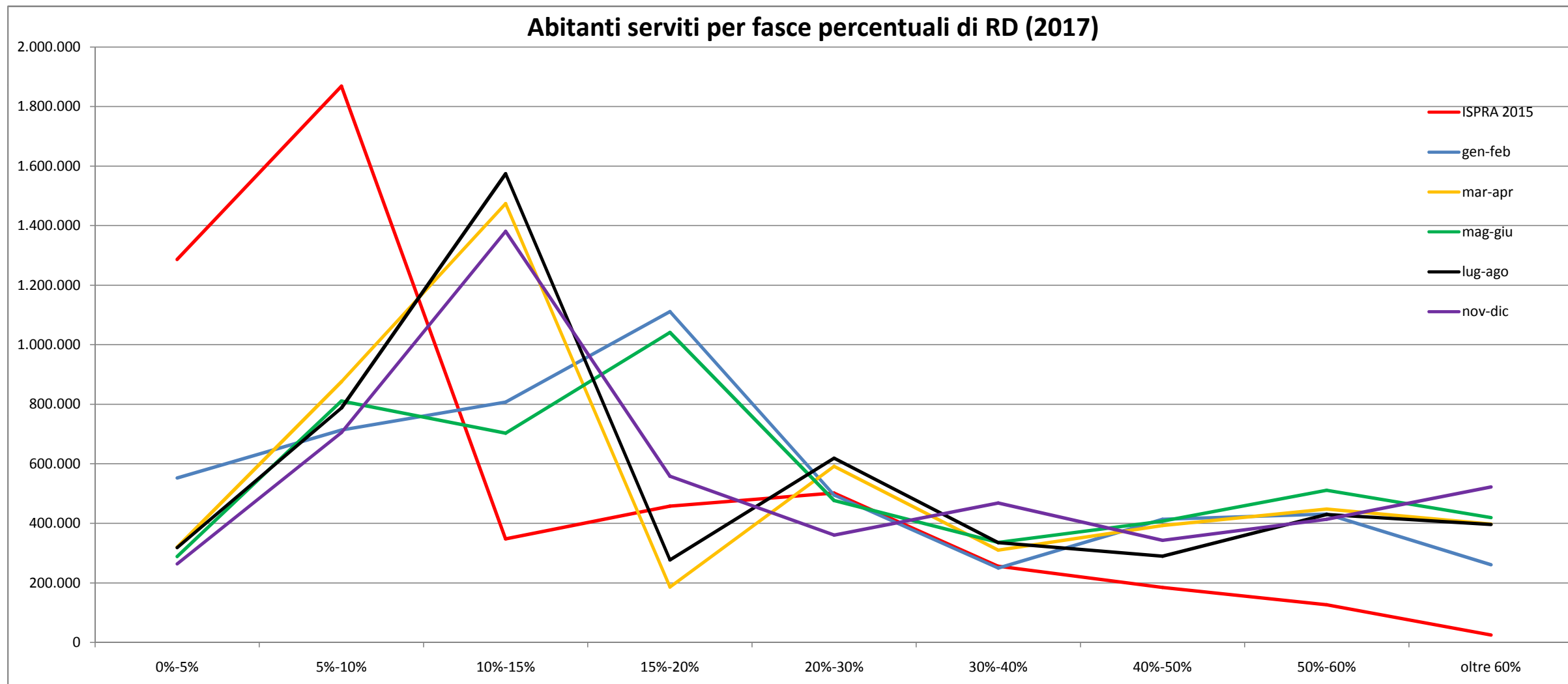


POPOLAZIONE SERVITA							
Fascia	ISPRA 2015	gen-feb	mar-apr	mag-giu	lug-ago	set-ott	nov-dic
0%-5%	1.286.386	552.918	319.856	288.255	318.634	211.067	264.074
5%-10%	1.868.831	713.402	876.549	811.336	787.894	846.898	705.508
10%-15%	348.175	807.683	1.474.361	703.445	1.574.515	915.357	1.381.564
15%-20%	458.112	1.111.378	186.112	1.041.859	277.495	832.908	557.967
20%-30%	501.962	495.032	591.662	477.306	619.249	538.114	360.982
30%-40%	256.315	249.898	310.027	336.394	335.568	494.026	468.594
40%-50%	184.609	414.126	392.722	407.438	290.003	344.174	343.059
50%-60%	126.838	431.493	447.954	511.472	429.778	474.664	413.878
oltre 60%	25.413	261.039	397.709	419.447	396.421	374.403	522.377
	5.056.641	5.036.969	4.996.952	4.996.952	5.029.557	5.031.611	5.018.003



Abitanti serviti per fasce percentuali di RD (2017)

