







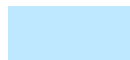
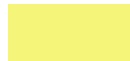





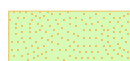
REGIONE SICILIANA  
Assessorato del territorio  
e dell'ambiente

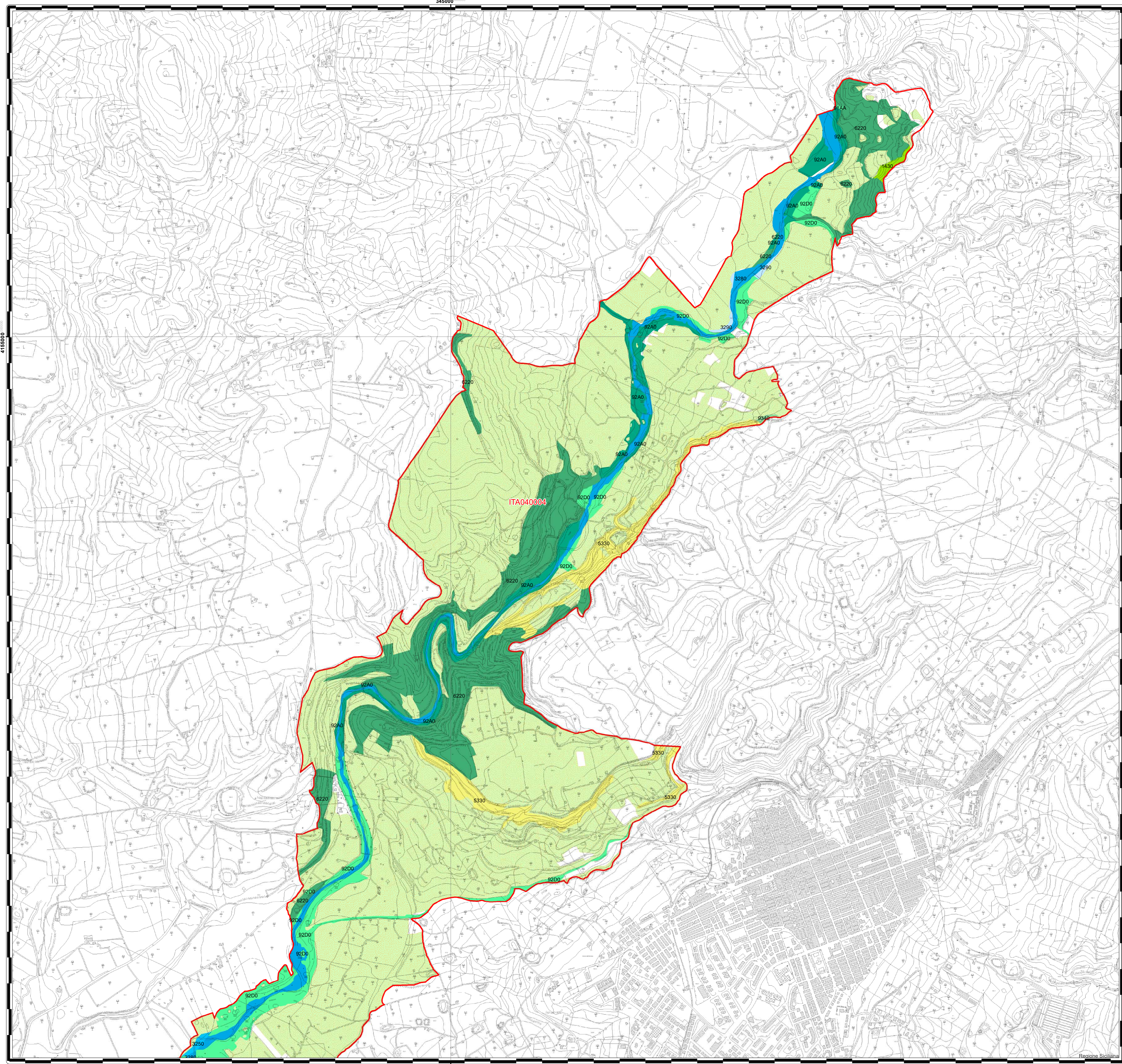
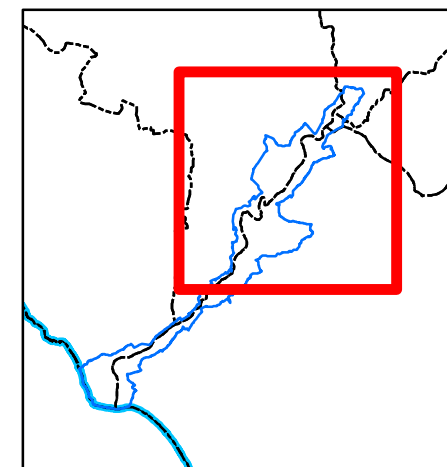
**ITA040004**  
Foce del Fiume Verdura  
Tavola 1 di 2  
Scala 1:10.000



Gennaio 2026

### Legenda

-  ITA040004
-  1430 - Praterie e fruticeti alonitrofilii (Pegano-Salsotelea)
-  3250 - Fiumi mediterranei a flusso permanente con *Glaucium flavum*
-  3280 - Fiumi mediterranei a flusso permanente con il *Paspalo-Agrostidion* e con filari ripari di *Salix* e *Populus alba*
-  3290 - Fiumi mediterranei a flusso intermittente con il *Paspalo-Agrostidion*
-  5330 - Arbusteti termomediterranei e pre-desertici
-  6220\* - Percorsi substeppici di graminacee e piante annue dei Thero-Brachypodietea
-  91AA\* - Boschi orientali di *Quercia* bianca
-  92A0 - Foreste a galleria di *Salix alba* e *Populus alba*
-  92D0 - Gallerie e forteti ripari meridionali (*Nerio-Tamaricetea* e *Securinegion tinctoriae*)
-  9340 - Foreste di *Quercus ilex* e *Quercus rotundifolia*
-  Habitat delle specie





REGIONE SICILIANA  
Assessorato del territorio  
e dell'ambiente

**ITA040004**  
Foce del Fiume Verdura  
Tavola 2 di 2  
Scala 1:10.000



Gennaio 2026

### Legenda

- ITA040004
- 1210 - Vegetazione annua delle linee di deposito marine
- 1430 - Praterie e fruticeti alonitrofilii (Pegano-Salsoletia)
- 3250 - Fiumi mediterranei a flusso permanente con *Glaucium flavum*
- 3280 - Fiumi mediterranei a flusso permanente con il *Paspalo-Agrostidion* e con filari ripari di *Salix* e *Populus alba*
- 5330 - Arbusteti termomediterranei e pre-desertici
- 6220\* - Percorsi substeppici di graminacee e piante annue dei Thero-Brachypodietea
- 92A0 - Foreste a galleria di *Salix alba* e *Populus alba*
- 92D0 - Gallerie e forteti ripari meridionali (*Nerio-Tamaricetea* e *Securinegion tinctoriae*)
- Habitat delle specie

